

The Best New Builds ♦ Extensions ♦ Conversions ♦ Home Improvements

SELF BUILD & DESIGN

www.selfbuildanddesign.com

December 2014 £4.25



Barn again

**Beginner's guide
to barn conversions**

- ♦ Finding a barn
- ♦ Design & planning
- ♦ Finance
- ♦ Construction

*The hub of
the home*
New technology

**ON
TREND**
RADIATORS
FLOOR & WALLS
KITCHENS
LIGHTING

**DEALING WITH
FLOOD RISK**

*Inspiring
case studies*

- ♦ Passivhaus eco home
- ♦ Submerged new build
- ♦ Timber-framed remodel
- ♦ New England-style makeover

INTERVIEW

TRICIA GUILD

*"Planning makes it a reality and
prevents disappointment."*

PLUS GET FREE ACCESS TO OUR ONLINE PLOTS DATABASE

SELF BUILD & DESIGN

www.selfbuildanddesign.com

December 2014 £4.25



INTERIOR DESIGN

Out of the dark

Emma and Ian Harman have transformed their two-bedroom Victorian terrace house in east London into a modern and light three-bedroom home with the help of a professional design studio.

When Emma and Ian Harman bought their two-bedroom, mid-terrace Victorian house in May 2013, their busy modern lifestyle didn't quite fit with its traditional layout – a common dilemma for many who seek out period properties for their classic features, but not their dark spaces.

The couple decided to seek professional help from Phillips Design Studio, and work started the following month.

The brief was to convert and modernise the house, creating more space and light while retaining all period features. The designers also faced the challenge of adding a third bedroom to the property, and creating rooflights for the newly exposed kitchen ceiling.

"The aim was to make the small dark kitchen, which had access to the rear terraced garden, feel larger, brighter and more inviting,"

designer Tom Phillips explains. The solution was to remove the flat ceiling and open the space up to the rafters, adding rooflights to brighten and define the space.

During the work, the team discovered a chimney breast in the wall and a water storage tank in the ceiling void. The chimney was left exposed to create another feature, but the water tank was more of a problem.

"After some head scratching we discovered this tank was still operational and supplied the old gravity-fed boiler of the flat below," says Tom. "We had to approach the neighbour to have a discussion on how best to resolve the scenario without compromising our design."

In order to retain the design, a new combi boiler was given to the downstairs neighbour so that the old water tank could be removed completely. ➔

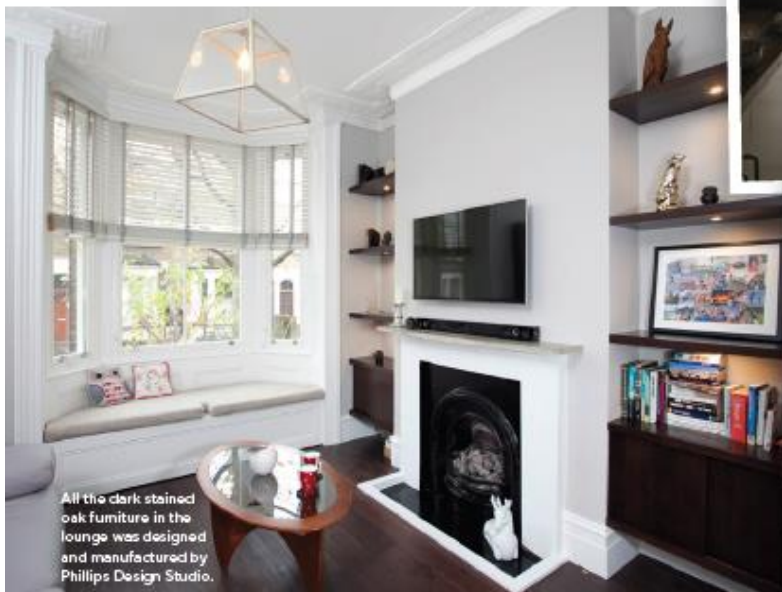
By contrasting the off-white base units with a gunmetal grey gloss wall unit, the light is effectively reflected from the new rooflights in the kitchen.



BEFORE



BEFORE



All the dark stained oak furniture in the lounge was designed and manufactured by Phillips Design Studio.



SELF BUILD & DESIGN

www.selfbuildanddesign.com

December 2014 £4.25



Phillips Design Studio INTERIORS

SHOPPING LIST



Lounge/diner

Flooring Brooks Brothers
Timber: brookstimmer.com
Oak AV/niche furniture
Bespoke Phillips Design Studio:
phillipsdesignstudio.com
Bench seat Bespoke Phillips Design
Studio: phillipsdesignstudio.com
Revive vertical tower radiators
Claygate: claygate.co.uk
**Lighting glass & metal box pendant
light** DesRes: desresdesign.co.uk

Kitchen

Burford White & Glendevon kitchen units
Howdens Joinery Ltd: howdens.com
Splash back (Gris Perla 200x100mm)
Metro Tile: metrotiles.co.uk
**Lighting Industrial pendant
in black & gold finish** Andy
Thorton: andythornton.com
Worktop Caesarstone Prima
Granite: caesarstone.co.uk

Principal bedroom

**Bespoke wardrobes and dressing
table in wenge stained oak** Bespoke
Phillips Design: phillipsdesignstudio.com

Bathroom

Jones WC Saneux: saneux.com
Heated towel rail Claygate: claygate.co.uk
Celeste 80 unit/basin Bauhaus
(BD): bauhaus-bathrooms.co.uk
Aluminium cabinet Bauhaus (BD):
bauhaus-bathrooms.co.uk
**Pure wetroom shower kit (base,
drain & install)** wetroomstore.com
Shower screen (bespoke) Express
Toughening: expresstoughening.com

Exterior

New sash windows Pane &
Simple: paneandsimple.co.uk



BEFORE

‘During the work, the team discovered a chimney breast in the wall and a water storage tank in the ceiling void.’



SELF BUILD & DESIGN

www.selfbuildanddesign.com

December 2014 £4.25



Phillips Design Studio INTERIORS

SHOPPING LIST



Lounge/diner

Flooring Brooks Brothers
Timber: brookstimmer.com

Oak AV/niche furniture
Bespoke Phillips Design Studio:
phillipsdesignstudio.com

Bench seat Bespoke Phillips Design
Studio: phillipsdesignstudio.com

Revive vertical tower radiators
Claygate: claygate.co.uk

**Lighting glass & metal box pendant
light** DesRes: desresdesign.co.uk

Kitchen

Burford White & Glendevon kitchen units
Howdens Joinery Ltd: howdens.com

Splash back (Gris Perla 200x100mm)
Metro Tile: metrotiles.co.uk

**Lighting industrial pendant
in black & gold finish** Andy
Thornton: andythornton.com

Worktop Caesarstone Prima
Granite: caesarstone.co.uk

Principal bedroom

**Bespoke wardrobes and dressing
table in wenge stained oak** Bespoke
Phillips Design: phillipsdesignstudio.com

Bathroom

Jones WC Saneux: saneux.com

Heated towel rail Claygate: claygate.co.uk

Celeste 80 unit/basin Bauhaus
(BD): bauhaus-bathrooms.co.uk

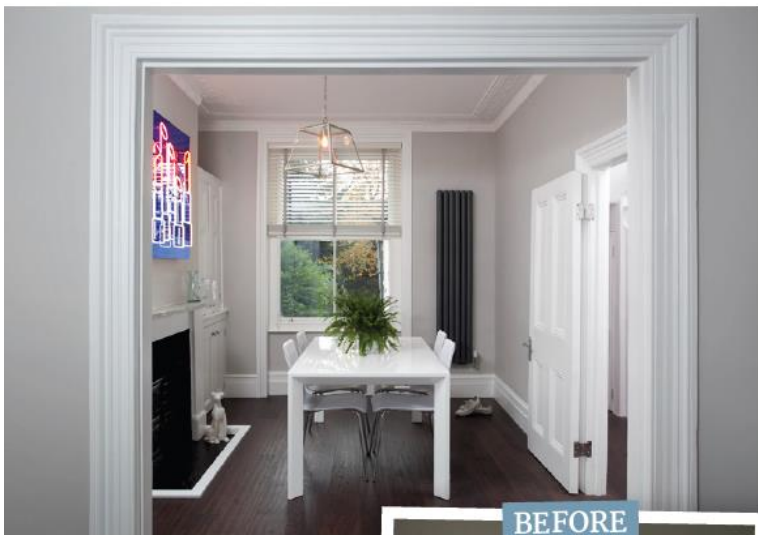
Aluminium cabinet Bauhaus (BD):
bauhaus-bathrooms.co.uk

**Pure wetroom shower kit (base,
drain & install)** wetroomstore.com

Shower screen (bespoke) Express
Toughening: expresstoughening.com

Exterior

New sash windows Pane &
Simple: paneandsimple.co.uk



‘During the work, the team discovered a chimney breast in the wall and a water storage tank in the ceiling void.’

